

Chicago Costume Plan

Act One - Scene 1

Setting: Vaudeville Club
Songs: All That Jazz - All
Costuming: Opening

Character	Actor	Description	Costume
Announcer		Reporter	Pleated, loose pants (black or dark grey tweed); White shirt; Vest; Wide silk striped tie; Fedora
Velma		Sexy, stand-out; More sparkly and more bare than ensemble (bare back)	Black dress; Sequins and Fringe; Black splice gloves
Roxie		Pink teddy with matching kimono	Pink/black teddy; pink kimono
Female Ensemble		Classy flappers; Muted tones (24)	Rose, pink, and champagne beaded flapper dresses
Male Ensemble		Reporters	Jacket/vest - Mix of tans and greys (lean towards greys); Pleated loose black pants with cuffs; Wide silk ties (clip-on or pre-tied); white shirt with short, non-button collar
Fred Casely		Street clothes, disheveled	Brown ensemble pants, suspenders, tank tee, open shirt; Open tie (not clip-on)
Orchestra		Visible on stage, so need to be costumed (especially conductor);	<i>White shirts; Black tux jackets (tails); Black pants; Does Lambert have Orchestra performance uniforms that can be used for this? If so, may be able to add a good bow tie and be done.</i>

Velma Kelly - All Acts/Scenes except Finale



Concept

Costume

Shorten by several inches - still ends in fringe



Dress and gloves ordered 11/24/2017



MC - Head Reporter



Tweed jacket - removed in first scene
Fedora - Worn throughout
Double vest
Stripe Tie
Black or dark grey tweed pleated pants
Dark dress shoes (actor's own)
Black socks
White shirt
Arm garter



Roxie - All that Jazz and Funny Honey (Act 1, Scenes 1 and 2)

Concept



Costume



Act One - Scene 1 - Male Ensemble (Reporters)

Concept



Act 1, Scene 1 - Male Ensemble (Reporters)

Costume

All Male ensemble and leads (12)



10 watching



Act One - Scene 1 - Female Ensemble

<http://drurylanetheatre.com/shows/17-181/chicago>

Concept



All That Jazz (Act 1, Scene 1) - Female Ensemble

Costume

Pink, Rose, and Beige flapper dresses - All ensemble girls (23)
White satin evening gloves (25 pair)

25 pairs of gloves
purchased



Act One - Scene 2

Setting: Roxie's Bedroom

Songs: Funny Honey - Roxy, Amos

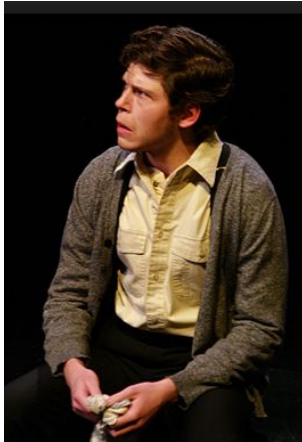
Character	Actor	Description	Costume
MC		Head reporter	Same as Scene 1
Amos		Dumpy; Mechanic	Brown Mr Rogers sweater buttoned; Baggy pleated ensemble pants; Off-white shirt (open neck)
Roxie		Sweet, then not-so-sweet, housewife	Same as Scene 1, with kimono
Fogarty		Policeman	Ensemble costume; No vest, Suspenders, Fedora, Badge, Gun holster

Act One - Scene 2 - Amos

Concept



Brown Ensemble Pants
Brown shoeby sweater
Off-white shirt



Act One - Scene 1 - Fogarty

Costume



[Click to open expanded view](#)



Act One - Scene 3

Setting: The Jail

Songs: CellBlock Tango - All

<https://www.fabric.com/buy/0342337/charmeuse-satin-35-stripe-white-black>

Character	Actor	Description	Costume
Announcer		Reporter	Same as previous scenes
Velma (Cicero)		Murderess	Black Dress; Jail Robe
Liz (pop)		Murderess	Black Mesh Leo; Jail Robe
Annie (six)		Murderess	Black Mesh Leo; Jail Robe
June (squish)		Murderess	Black Mesh Leo; Jail Robe
Hunyak (uh-uh)		Murderess	Black Mesh Leo; Jail Robe
Mona (lipschitz)		Murderess	Black Mesh Leo; Jail Robe
Female Ensemble		Inmates	Mixed black leos (actress own); Each with black/white stripe accessory
Male Ensemble		Black, vaudeville	Black pants (some jazz pants, some spandex jeans); Black shirt (mix of t-shirts, wife beaters, dress shirts)

Cellblock Tango - Act 1, Scene 3

Concept



Cellblock Tango - Act 1, Scene 3

Concept



Costume



Various Black/Grey Corsets w/ 12" fringe attached
Black shorts under



3 ½ yards (60")
\$3.38/yd

Cellblock Tango - Act 1, Scene 3

Costume

Liz (Pop)



Annie (Six)



June (Squish)



Hunyak



Velma (Cicero)



Mona
(Lipschitz)



Alternate choices
Straps would be added

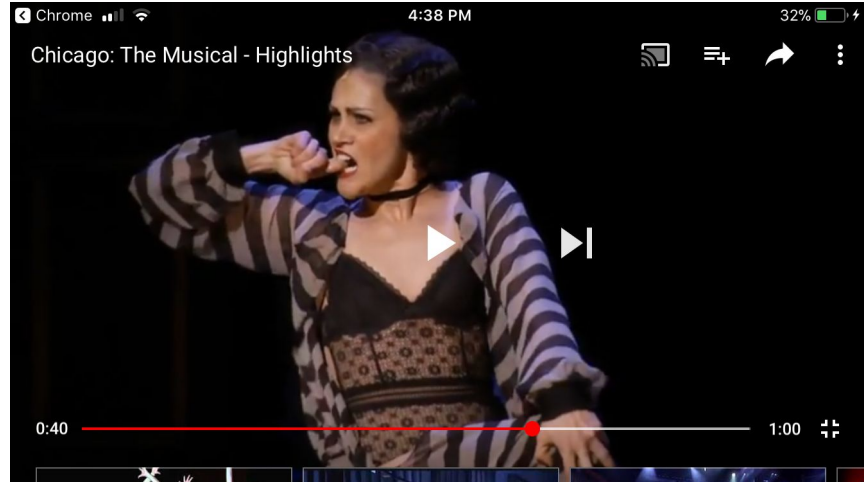


Corset Sizing

Manufacturer size	Band Size	Cup Size	Hip (in inches)	Waist (in inches)
XS	30-32	A-B	31-33	21-23
S	32-34	A-C	33-35	23-25
M	34-36	B-C	35-37	25-28
L	36-38	C-D	37-39	28-30
XL	38-40	D-DD	39-41	30-32
2XL	40-42		41-43	32-34
3XL	42-44		43-45	34-36
4XL	44-46		45-47	36-38
5XL	46-48		47-49	38-40

Cellblock Tango - Act 1, Scene 3

Ensemble Accessories



Cellblock Tango

Setting: The Jail
Songs: CellBlock Tango - All

Sizes

Actor	Role	Leo Size	Robe Size
	Liz (Pop)	XS	XS
	June (Squish)	S	S
	June (Squish)	XL	XL
	Liz (Pop)	L/XL	L/XL
	Mona (Lipschitz)	M	M
	Mona (Lipschitz)	M	M
	Annie (Six)	M	M
	Annie (Six)	M	M
	Hunyak	S	S
	Velma	M	M
	Roxie		M



Act One - Scene 4

Setting: The Jail

Songs: When You're Good to Mama - Mama Morton

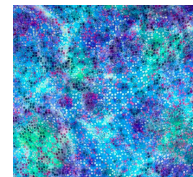
Character	Actor	Description	Costume
Announcer		Reporter	Same as previous scenes
Velma		Inmate	Black dress; Jail Robe
Mama Morton		Prison Matron w/ vavoom	Grey sparkly corset, darker grey skirt, Purple batik robe with feathers

Mama Morton

Concept



Costume



Act One - Scene 5

Setting: The Jail

Songs:

Character	Actor	Description	Costume
Velma		Inmate	Same as previous scene
Roxie		Inmate	Roxie Dress; Jail Robe (closed - velcro)
Mama Morton		Prison Matron	Same as previous scene w/Grey jacket

Mama Morton - Act 1, Scene 5

Costume



Act One - Scene 6

Setting: Jail Visitor's Area

Songs:

Costuming: A Tap Dance

Character	Actor	Description	Costume
Announcer		Reporter	Same as previous scenes
Roxie		Inmate	Same as previous scene
Amos		Dumpy; Mechanic	Same as Act 1, Scene 2
Tap Dancer		Tap Dancer	Stripe suspenders, bowtie, black pants, white long-sleeved shirt



Costume for tap dancer

Act One - Scene 7

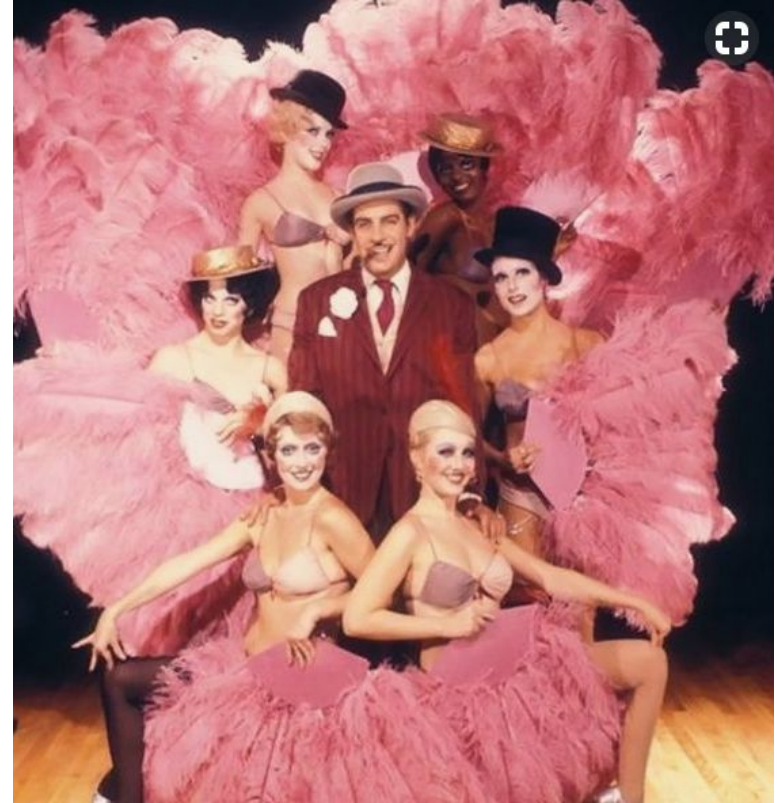
Setting: Stage

Songs: All He Cares About is Love - Billy Flynn, Female Ensemble

Character	Actor	Description	Costume
Announcer		Reporter	Same as previous scenes
Billy Flynn		Slick Lawyer; Amorous	Pink stripe jacket, white shirt, black pants (all breakaway); large white carnation, white pocket square, white boater hat; White tank and red heart long boxers; Black socks and black shoes
Female Ensemble		Showgirls om pink fluffy/sparkly dance costumes	Embellish purchased pink leos; Dark pink fluffy skirts

All he cares about is love - Billy Flynn

Concept



All he cares about is love - Billy Flynn - Breakaway

Costume



C

1 ½ yards



Black pleated pants

How to make a breakaway suit

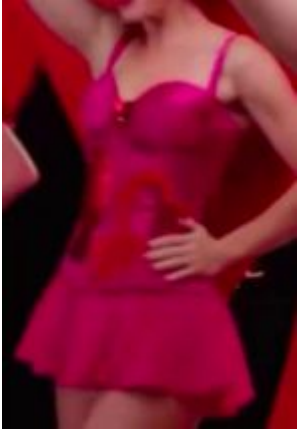
<https://www.youtube.com/watch?v=ogNKtA-pLQ>

<https://www.youtube.com/watch?v=fT8ZZ2nUnhU>

<https://www.youtube.com/watch?v=8UM0Rg0V6Uo>

All he cares about is love - Ensemble

Concept



All he cares about is love - Ensemble

Costume



Act One - Scene 8

Setting: Billy's Office/Courtroom

Songs: Little Bit of Good - Mary Sunshine; Press Conference Rag - All

Character	Actor	Description	Costume
Billy Flynn		Slick Lawyer	<i>After Tailor leaves</i> Conservative dark grey (court) suit with White shirt, red pocket square, red bow-tie, suspenders and large red carnation Extra pair of pants to throw at tailor
Amos		Dumpy, dejected husband	Same as Act 1, Scene 2
Roxie		Courtroom Attire	Roxie dress; White coat (buttoned to conceal dress)
Mary Sunshine		Concerned, matronly reporter (church lady)	Matronly dress; Yellow floral scarf; Birds-nest hat; Short gloves
Matron		One line - "Mr Flynn, the reporters are here"	Dress from earlier scene; Grey suit jacket
Female Ensemble		Courtroom	Reporter suits or simple dresses; Cloche hats (from Millie)
Male Ensemble		Courtroom	Reporter

All he cares about is love - Billy Flynn - After breakaway

Concept



Costume



Dark suit (Thrift shop)
White long-sleeve shirt

“Press Conference Rag”

Concept



“Press Conference Rag” - Roxie

Costume



Coat over “Roxie” dress

Press Conference Rag - All ensemble dressed as male reporters

Concept

Female ensemble - 23

Male ensemble - 10 (12 w/ Thomas and Drew)

Costume

Brown pleated pants
Brown suspenders
Brown (tan?) fedora
White dress shirt
Muted silk tie



Women's Dress Shirt Sizing

CLASSIC (inch)

	XS		S		M		L		XL	
SIZE	0	2	4	6	8	10	12	14	16	18
BACK LENGTH	27	27 1/4	27 1/2	27 3/4	28	28 1/4	28 1/2	28 3/4	29	29 1/4
BUST	38	39	40	41	42	43	44 1/2	46	47 1/2	49 1/2
SWEEP	39	40	41	42	43	44	45 1/2	47	48 1/2	50 1/2

Alpha Size	Numeric Size	EUROPEAN SIZE	Bust
XXS	00		30½
XS	0	25	31½
	2	26	32½
S	4	27	33½
	6	28	34½
M	8	29	35½
	10	30	37
L	12	31/32	38½
	14		40
XL	16		41½
	18		43

Mary Sunshine

Costume

Need 2 - one size 8 or 10 and one for size 6 (double-cast)



Act One - Scene 9

Setting: Stage

Songs: Roxie - Roxie, Male Ensemble

Character	Actor	Description	Costume
Announcer		Reporter	Same as earlier scenes
Roxie		Roxie	Dress from last scene w/ no jacket
Mary Sunshine		Concerned, matronly reporter (church lady)	Same as last scene
Male Ensemble		Reporters	Same as previous scenes

“Roxie”

Costume



Size: S

“Roxie”

Concept



Act One - Scene 10

Setting: Jail

Songs:

Character	Actor	Description	Costume
Velma		Velma	Same as earlier scenes
Mama Morton		Mama Morton	Dress from last scene w./ jacket

Act One - Scene 11

Setting: The Jail

Songs: I Simply Cannot Do It Alone

Costuming: Jail Lounge

Character	Actor	Description	Costume
Velma		Inmate	Black Dress; Jail Robe
Roxie		Inmate	Dress from last scene; Jail Robe
Announcer		Reporter	Same as earlier scenes

Act One - Scene 12

Setting: Limbo

Songs:

Costuming: GTH Kitty's bedroom

Character	Actor	Description	Costume
Mama Morton		Jail matron	Grey skirt, jacket, and corset
Go-to-Hell Kitty		Newest Murderess; Pineapple Heiress	Black Dress; White/black/silver fur; Rich-girl hat
Harry		Kitty's Husband	Brown pleated pants, white tank shirt
2 Female Ensemble		Harry's mistresses	Black leos and shorts
Announcer		Reporter	Same as earlier scenes

Go to Hell Kitty

Concept



Costume



Act One - Scene 13

Setting: The Jail

Songs: My Own Best Friend - Velma, Roxie

Costuming: Jail Lounge

Character	Actor	Description	Costume
Reporters			Same as earlier
Billy Flynn		Slick Lawyer	Same as Scene 7 (<i>end</i>)
Go-to-Hell Kitty		Newest Murderess; Pineapple Heiress	Same as Scene 12, but with strait jacket
Velma		Inmate	Black dress; Jail Robe
Roxie		Inmate	Roxie dress; Jail Robe
Mary Sunshine		Concerned, matronly reporter (church lady)	Same as earlier
Matron			Dress from earlier scene w/ Grey suit jacket

Act Two - Scene 1

Setting: The Jail

Songs: I Know a Girl - Velma; My Baby and Me - Roxie;

Costuming: Jail Lounge

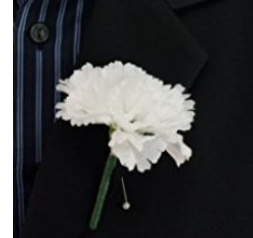
Character	Actor	Description	Costume
Reporters			Same as Act 1 reporters
Billy Flynn		Slick Lawyer	Black suit from before with white shirt, conservative pocket square and bow-tie, suspenders and large white carnation
Amos		Dumpy, dejected husband	Grey coveralls; Clown Ruff; Newspaper Hat
Roxie		Prison Dress	Grey dress; White medical robe
Velma		Inmate	Black Dress; Jail Robe
Mary Sunshine		Concerned, matronly reporter	Same as earlier
Matron			Dress from earlier scene w/ Grey suit jacket
Doctor			Ensemble costume with white medical coat
Female Ensemble		Male reporters	Male reporter costumes from Press Conference Rag
Male Ensemble		Reporter	Brown ensemble pants; white tank; Blue Suspenders, Bonnets

Billy Flynn - Act 2

Concept



Costume



My Baby and Me - Roxy



Boys (7)

Roxie's Doctor



Act Two - Scene 2

Setting: The Jail

Songs: Mr. Cellophane - Amos;

Costuming: Jail Lounge

Character	Actor	Description	Costume
Amos		Dumpy, dejected husband	Grey coveralls; Clown Ruff; Newspaper Hat
Billy Flynn		Slick Lawyer	Black suit from last scene

Mr. Cellophane - Amos

Concept



Costume



No hat



Act Two - Scene 3

Setting: The Jail

Songs: When Velma Takes the Stand

Costuming: Poker Game



Character	Actor	Description	Costume
Billy Flynn		Slick Lawyer	Black suit from last scene
Velma (Cicero)		Murderess	Black Dress; Jail Robe; Silver shoes w/ rhinestone buckles (prop only)
Liz (pop)		Murderess	Black Mesh Leo; Jail Robe
Annie (six)		Murderess	Black Mesh Leo; Jail Robe
June (squish)		Murderess	Black Mesh Leo; Jail Robe
Hunyak (uh-uh)		Murderess	Black Mesh Leo; Jail Robe
Mona (lipschitz)		Murderess	Black Mesh Leo; Jail Robe
Matron			Dress from earlier scene w/ Grey suit jacket
Male Ensemble		Velma's boys	Black pants, white shirt, and suspenders from before

Act Two - Scene 4

Setting: Courthouse Anteroom

Songs:

Costuming: Court clothes

Character	Actor	Description	Costume
Announcer		Reporter	Same as Act 1, scene 1
Matron		Matron	Dress from previous w/ grey jacket
Aaron		Lawyer	Ensemble suit (Jacket)
Bailiff		Bailiff	Ensemble suit (Jacket)
Hunyak (uh-uh)		Murderess - Hanging	Black Mesh Leo w/o skirt (doing silks)

Act Two - Scene 5

Setting: Courthouse Anteroom

Songs: Razzle Dazzle

Costuming: Show people

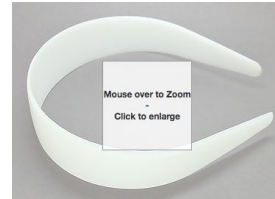
Character	Actor	Description	Costume
Billy Flynn		Showman	Black suit from Scene 2, but with sequined tux jacket instead of suit jacket;
Roxie		Dress	Blue lace dress
Bailiff		Bailiff	Same as Scene 3
Ensemble - Male		Show people	Black pleated pants, Black t-shirts; Sequin vests
Featured Female Ensemble		Show people/Circus	Silver top, black shorts
Ensemble - Female		Show people/Circus	Blue sequin costumes

Razzle Dazzle - Showgirls



11 available from Millie
10 XXLC, 1 XLC
Can be re-styled

Alternative feathers - Prime



Razzle Dazzle - Girl Peformers



Jenna, Cindy, Caroline, Jin, Annie, Emma L.



w/ Black pants and black shirt

Julia, Alden

Razzle Dazzle - Guys

Costume



Razzle Dazzle - Billy Flynn



Act Two - Scene 6

Setting: Courtroom

Songs:

Costuming: Court

Character	Actor	Description	Costume
Billy Flynn		Lawyer	Black suit from Scene 4, back to regular suit jacket
Judge		Judge	Black robe with collar
Roxie		Dress	Blue lace dress and silver shoes, over Hot Honey Rag dress
Harrison		Prosecutor	Ensemble Suit w/ jacket
Amos		Witness and side scene flashback	Brown pleated pants, Dumpy sweater, White shirt
Clerk		Clerk - Swears in witnesses	Ensemble Suit w/ jacket
Fred Casely		Side scene	Black ensemble pants, Dark suit jacket, Dark paisley tie
Ensemble - Female		Courtroom	Juror dresses
Ensemble - Male		Courtroom	Ensemble reporter w/ coats

Female Reporters - Court

Concept

All Female ensemble and leads (24)



Female Jurors and reporters - Court

Costume - Muted simple long full dresses and bucket hats

All Female ensemble and leads (23)



Dress Size Chart

Women's Regular Sizing

General Size	US Clothing Size	Chest/Bust Measurement	Waist Measurement	Hips
XS	0-2	32"-33"	24"-25"	34.5"-35.5"
S	4-6	34"-35"	26"-27"	36"-37"
M	8-10	36"-37"	28"-29"	38.5"-39.5"
L	12-14	38.5"-40"	30.5"-32"	41"-42.5"
XL	16-18	41.5"-43"	33.5"-35"	44"-45.5"

Roxie - Court

Costume



Judge

Costume



Act Two - Scene 7

Setting: The Jail

Songs: Class - Matron and Velma

Costuming: Jail Lounge

Character	Actor	Description	Costume
Matron		Matron	Dress from previous w/ grey jacket
Velma		Inmate	Black Dress; Jail Robe
Mary Sunshine		Concerned, matronly reporter (church lady); Aside from courtroom	Same as previous, over boxers and tank

Act Two - Scene 7

Setting: The Jail

Songs:

Costuming: Jail Lounge

Character	Actor	Description	Costume
Billy Flynn		Lawyer	Black suit from Scene 5
Mary Sunshine		Trannie revealed; Dress and wig come off	Dress from before; White long boxers and tank top

Mary Sunshine - Breakaway

Costume



1 ½ yards



Act Two - Scene 9

Setting: Courtroom

Songs: Nowadays - Roxy, Velma; Finale - All

Costuming: Court

Issue: How to get Roxie from court costume in beginning of scene to Finale costume and robe; Court dress must fit over finale costume - Exits, rips off (velcro) dress and replaces with white robe; Velma joins in finale costume with white robe; Both take off robe for Hot Honey Rag

Character	Actor	Description	Costume
Billy Flynn		Lawyer	Black suit from Scene 5
Judge		Judge	Black robe from Scene 5
Jurors			Reporter w/ jacket or day dress
Reporters			Reporter w/ jackets
Roxie		Finale costume with jacket	Silver Fringe dress, first covered by blue dress and then by White robe; Silver shoes; Silver hat, Silver cane
Velma		Finale costume with jacket	Silver Fringe dress, covered by White robe; Silver shoes; Silver white hat, Silver cane
Amos		Witness	Brown pleated pants, Sweater
Ensemble - Female		Finale	Flapper costumes from opening number
Ensemble - Male		Finale	Reporter costumes - Brown pleated pants, White long-sleeve shirts, Vests, Coats

Finale

Costume

Concept

